

Our goal at FORMation Architecture, Inc. is to make the architecture process fun and exciting for our employees as well as our clients. We currently have a wide variety of projects. Therefore, we are looking for an individual that fits the work style and culture of our office.

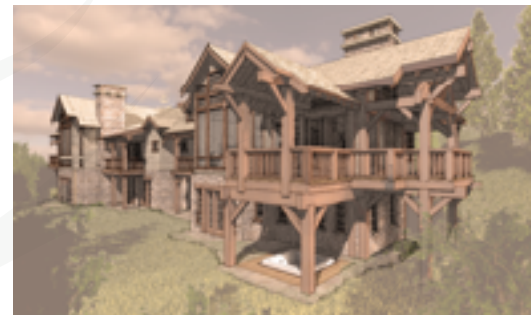
JOB DESCRIPTION:

- Contribute to all phases of project delivery, from design through construction
- Responsible for developing creative design solutions, as well as directly contributing to the production of accurate and high quality construction documents
- Must be flexible and willing to work independently, or in collaboration with staff as required on a project-by-project basis
- Understand common construction techniques and participate in construction site visits.



QUALIFICATIONS:

- Master of Architecture or Professional Bachelor Degree preferred
- 2-5 years' experience with Archicad (preferred), Revit or Auto CAD
- Proficient with Adobe Photoshop, Illustrator and Indesign
- Social media and website skills preferred - able to promote our firm and share our work on existing platforms and recommend new ideas
- 1-5 years' experience working in a design office
- Self-motivated, dedicated to quality work and excellent attention to detail
- Ability to work independently, with a team or directly with clients while displaying excellent demeanor, professionalism and service
- Outstanding time management skill with ability to prioritize and manage multiple projects and deadlines at any given time
- Positive and friendly attitude, and desire to contribute to our firm



We are a small office and offer a wide variety of opportunities to be part of multifaceted experiences. If you are willing to learn and contribute to all aspects of the architecture process, we are the firm for you.

If you meet our qualifications, please send us send a cover letter addressing your qualifications, resume, references, and work samples including portfolio of design work and /or production experience.

Send application materials to Craig Bergstedt at craig@formationarchitecture.com for interview considerations. Review of applications will be on a continual basis until the position is filled.